

QUALITY - AFFORDABILITY - RELIABILITY

The MDS-Vet™ Rigid Endoscope System is a multi-purpose endoscope designed for rhinoscopy, cystoscopy, arthroscopy and laparoscopy procedures.

INCLUDED IN RIGID ENDOSCOPE SYSTEM (ITEM # 48039):

- Rigid Endoscope - # 48035
- Operating Sheath - # 48037
- Diagnostic Sheath with Dual Valves and Trocars - # 48038
- LED Light - # 48335

ADDITIONAL OPTIONAL ITEMS MAY BE ADDED TO COMPLETE YOUR KIT!



Item # 48037



Item # 48035



Item # 48038



Item # 48335



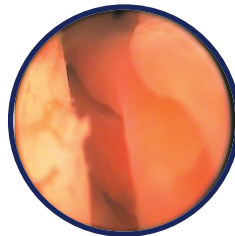
*High-Resolution USB Endoscopy Camera
Item # 48201



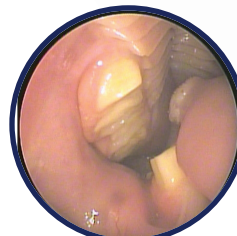
*Focusing Endoscope Coupler
Item # 48203



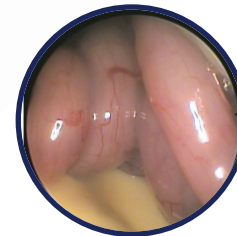
Item # 48304



Nasal



Dental



Laparoscopy

*Item # 48217

* Denotes Optional Purchase or Replacement Item

Item	Product Description	UOM
48039	Rigid Endoscope System, 2.7 mm x 175 mm, 30 Degree with Operating Sheath, Diagnostic Sheath & Trocars	Each
48035	*Rigid Endoscope, 2.7 mm x 175 mm, 30 Degree	Each
48037	*Operating Sheath with Operating Channel, Dual Stopcocks and Obturator for 2.7 mm x 175 mm, 30 Degree	Each
48038	*Diagnostic Sheath with Dual Valves for 2.7 mm x 175 mm, 30 Degree	Each
48201	*High-Resolution USB Endoscopy Camera	Each
48203	*Focusing Endoscope Coupler	Each
48217	*Storz to ACMI Light Guide	Each
48304	*50-Watt LED Light Source	Each
48335	*Portable LED Light Source	Each

**COMPATIBLE WITH ANY
LAPTOP COMPUTER OR
MONITOR WITH A VIDEO INPUT!**