



Anigen Rapid Test Kit

Canine Heartworm Antigen Test Kit



Immunochromatographic test for the qualitative detection of *Dirofilaria immitis* in canine serum, plasma or whole blood

Heartworms (*Dirofilaria immitis*) are relatively large parasites that, in adulthood, live in the heart and pulmonary arteries of infected dogs or cats. Dogs and cats acquire this infection when larval heartworms are transferred between infected and healthy animals via mosquito bites. Geographic areas with a large mosquito population have severe heartworm problems.

Commercial tests will detect antigens from adult female worms.

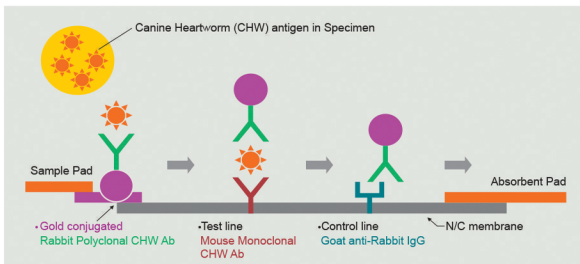
Until now, no commercial test is capable of detecting infections with only male worms¹.

Yet, in a recent study, **infections with only male worms occur in 5% of all confirmed cases of heartworms at necropsy².**

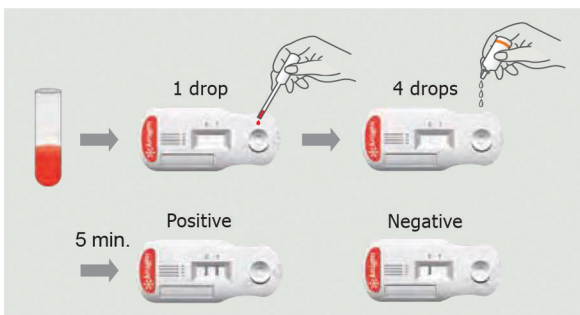
Features of ANIGEN Rapid Test Kit:

- Highly purified antibodies produced by biotechnology for the detection and capture of heartworm antigens
- Highly sensitive and specific
- Fast results within 5 min.
- Simple and easy to use
- Works with serum, plasma and whole blood
- Storage at room temperature (2 - 30°C)
- Small sample volume (40µL)

Principle of Rapid Test Kit:



Test Procedures:



Performance:

Field Trial Study ^{2,3}		
Anigen Canine Heartworm Ag Test Kit	Sensitivity	Specificity
Clinic A	100%	100%
Clinic B	100%	100%
Clinic C	100%	100%

	Sensitivity			Specificity
	2 adult female worms	3 adult female worms	Male worms	
Anigen Canine Heartworm Ag Test Kit ²	100%	100%	100%	100%

Competitive Products	Sensitivity			Specificity
	2 adult female worms	3 adult female worms	Male worms	
Product A ¹	85%	100%	0%	100%
Product B ¹	95%	96.5%	0%	100%
Product C ¹	90%	94.7%	0%	100%

¹ JW McCall et al.; Proceedings of the AAVP 45th Annual Meeting

² USDA product registration file

³ C Reinemeyer, C Tu Ba et al.; Proceedings of the AAVP 53rd Annual Meeting
U.S. Permit No. 544B ; This product is protected by Patent No : U.S. 5,714,389 - U.S. 6,485,982 B1

