



Point-of-Care Handheld Ultrasound

Four models that fit your needs and budget.





- Lightweight and portable, with embedded WiFi
- Easy to learn and use
- Image optimization showing gain, TGC, focus, harmonic, reject, depth, and dynamic range
- Measures length, area, circumference, angle, trace, and more
- Contains on-screen annotation with virtual keyboard
- Costs less than a traditional ultrasound probe, with no activation, subscription, or user fees
- For all patient sizes



Learn more
SonoMe-Vet.com
1-877-9-BIONET (1-877-924-6638)

bionet

MODELS AND SPECIFICATIONS

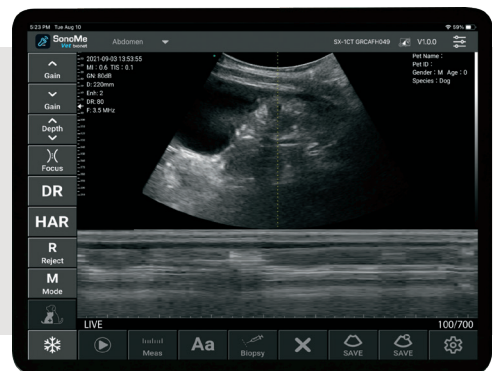
Model	Image quality	Convex	Linear	Mode	Frequency	Element	Animal size*	Warranty
 5CB General usage	Standard	✓		BW	3.2~5Mhz	128	S/M/L	1 year
 5C Extended usage	Standard	✓		BW/ COLOR	3.2~5Mhz	128	S/M/L	1 year
 H5C Extended usage	High Resolution	✓		BW/ COLOR	3.2~5Mhz	192	S/M/L	1 year
 H5C10L Extended usage	High Resolution	✓	✓	BW/ COLOR	C: 3.2~5Mhz L: 7.5~10Mhz	192	S/M/L	1 year

Linear probes available for special orders. Contact us for details.

*Animal size: Small (4.4 lbs to 20 lbs), Medium (21 lbs to 60 lbs), Large (61 lbs and higher)

VETERINARY-SPECIFIC MOBILE APP

- Easy-to-use on-screen operation
- Image optimization, measurement, annotation
- Store and review images on your device
- For iOS 8.0+



Bionet America Inc.
2691 Dow Ave., Suite B, Tustin, CA 92780
Phone: 1-877-9-BIONET (1-877-924-6638)
Email: Sales@BionetUS.com
Web: SonoMe-Vet.com

This product is designed for veterinary use only.

SINCE 1981
PENN
Veterinary Supply, Inc.
Phone: 800.233.0210
www.pennvet.com

bionet

www.BionetUS.com