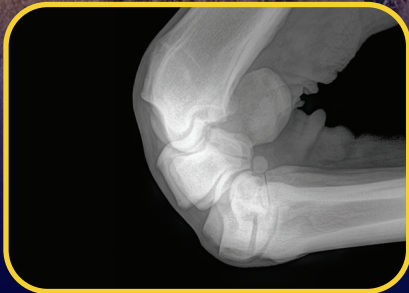
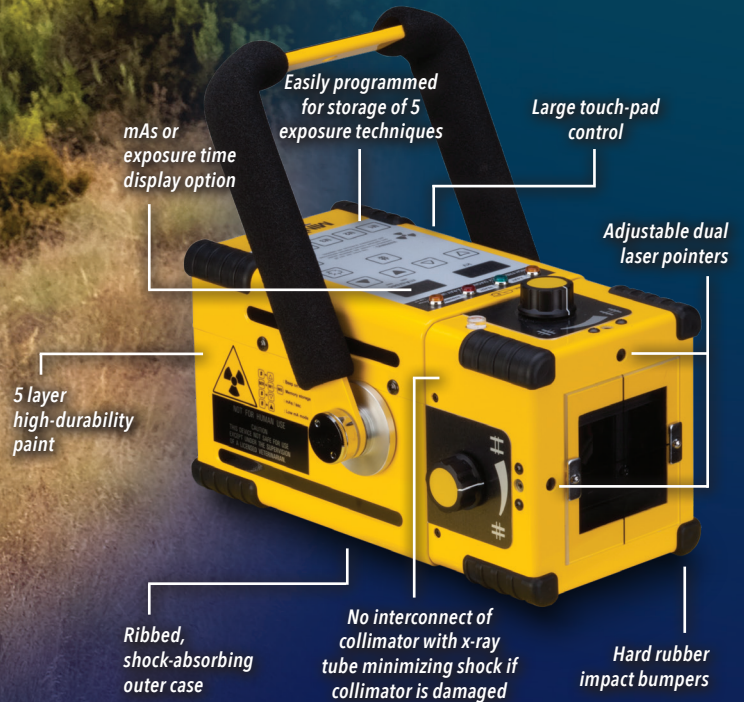


TR90+ TOUGHRAY



MinXray's innovative **Tough Ray** series technology brings portable x-ray imaging to a new level. High output, low weight and outstanding features are included in one of MinXray's most robust designs - the **TR90+ Tough Ray**. Features of the **TR90+** include:

- Unique HighBurst™ design, allows for more mA power - up to 30mA
- Automatic voltage input sensing and compensation for clean output in low-voltage setting
- Backed by a 5-year limited warranty

MINXRAY[®] INC.

Where you care, We're there.
Where you care, we're there.

TR90+ TOUGHRAY

ELECTRONIC DESIGN	Computer-controlled, high frequency, full-wave rectified
X-RAY OUTPUT WITH NORMAL INPUT VOLTAGE	30/18 mA @ 40-60 kVDC, 25/15 mA @ 62-70 kVDC, 20/12 mA @ 72-80 kVDC, 15/9 mA @ 82-90 kVDC
X-RAY OUTPUT WITH LOW INPUT VOLTAGE	15/9 mA @ 40-60 kVDC, 12.5/7.5 mA @ 62-70 kVDC, 10/6 mA @ 72-80 kVDC, 7.5/4.5 mA @ 82-90 kVDC
AC INPUT	120 or 230 V; 50/60 Hz; specify voltage desired
LINE VOLTAGE ADJUSTMENT	Automatic, dynamic with low voltage operation system
TIMER	.02-2 sec as follows: .02-.4 sec (.01 sec steps); .4-1.0 sec (.02 sec steps); 1.0-1.5 sec (.05 sec steps); 1.5-2.0 sec (.10 sec steps)
INTERNAL POWER SUPPLY	50 kHz High Frequency Inverter System
X-RAY TUBE	XDT-F90-0.8 SNM instruments factory
FOCAL SPOT SIZE	0.8 mm
ANODE HEAT STORAGE	7 kHU
TOTAL FILTRATION	2.7 mm Al equivalent
COLLIMATOR	Mikasa Model R-300V, continuously adjustable light beam type with adjustable dual integrated laser pointers to indicate central ray and distance in bright ambient light conditions
LP4 LASER POINTERS	Class IIIa; laser diode; max. output less than 2.2 mW, wavelength 635 nm
EXPOSURE SWITCH	Two stage deadman type
EXPOSURE CORD	8 ft (2.4 m)
POWER CORD	20 ft (6.1 m)
SIZE	7.4 x 6.2 x 12.3 in (18.8 x 15.7 x 31.2 cm)
WEIGHT	14.1 lb (6.4 kg)
DR INTERFACE	RJ45 connector



Ordering Information

TR90+ Tough Ray High Frequency Portable X-ray Unit

30-9mA @ 40-90 kVDC with carrying case and lightbeam collimator with integrated adjustable dual laser pointers, exposure switch and cord, and power cord.

X200S

Tripod stand

X200SCC

Carrying bag for X200S tripod

EFBTR

Redden equine footblock for TR90+ Tough Ray

SINCE 1981
PENN
Veterinary Supply, Inc.
Phone: 800.233.0210
www.pennvet.com

For more information about MinXray products, contact your local dealer or MinXray at:

MinXray, Inc.
3611 Commercial Avenue
Northbrook, Illinois 60062 USA
1-847-564-0323

Toll Free: 1-800-221-2245 (U.S. & CA.)
E-mail: info@minxray.com
Web: www.minxray.com

MINXRAY[®]
INC

Where you care, We're there.
Where you care, we're there.

