



**STELFONTA<sup>®</sup>**  
(tigilanol tiglate injection)  
1 mg/mL

## YOUR STORY BEGINS

---

A pet owner's guide to treatment with  
**STELFONTA<sup>®</sup>** (tigilanol tiglate injection)



Phone - 800.233.0210



[www.pennvet.com](http://www.pennvet.com)



## WHAT TO KNOW ABOUT TREATMENT with STELFONTA® (tigilanol tiglate injection)

You and your veterinarian have chosen a prescription medicine called STELFONTA as part of your dog's treatment plan.

Some preparation will be needed before your dog's treatment with STELFONTA. In this brochure, you will find information about the process and how to care for your dog afterward. And remember, always speak with your veterinarian if you have any questions about your dog's treatment.

### WHAT ARE MAST CELL TUMORS?

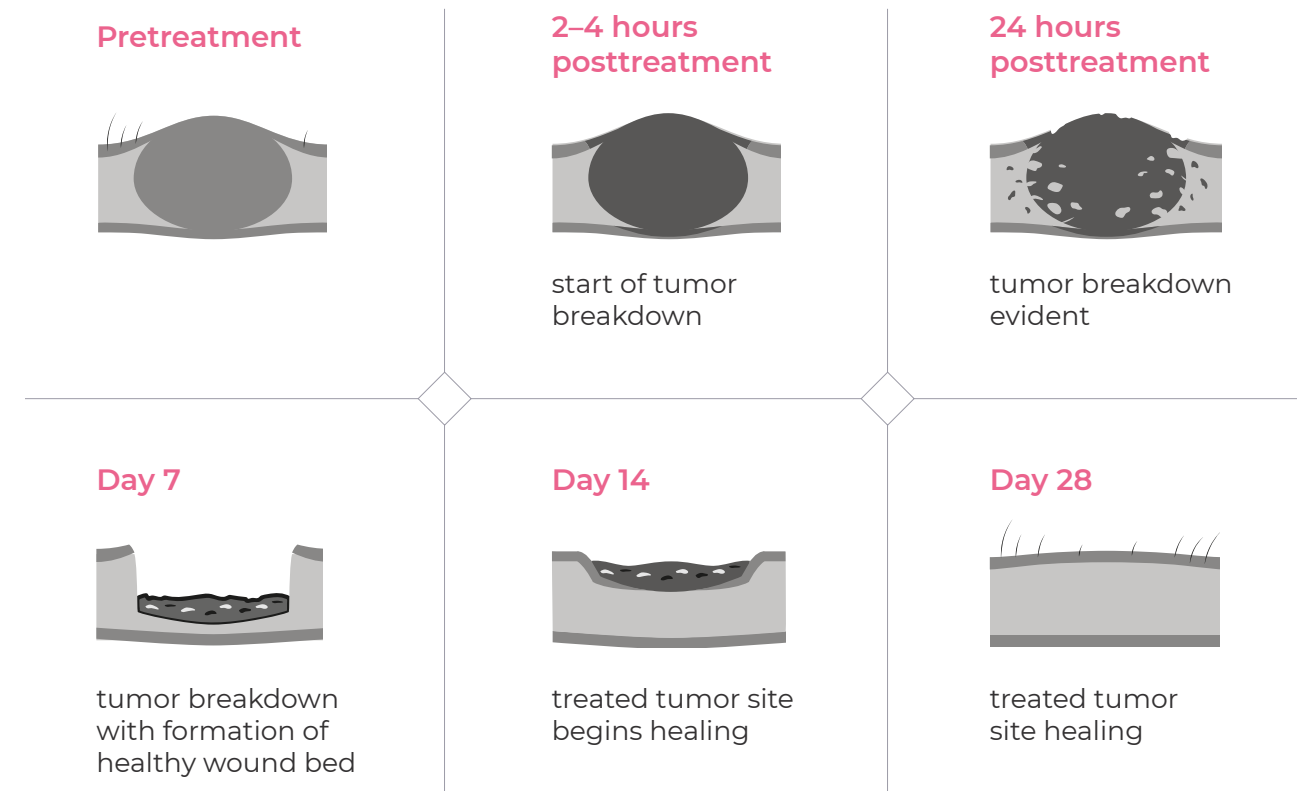
Mast cell tumors are a common form of skin cancer that affects a part of the body's immune system known as mast cells. They are the most common type of skin tumor in dogs, accounting for roughly 20% of all skin cancers.<sup>1</sup> Although mast cell tumors may affect any dog, the risk for developing them is higher in older dogs and dogs of certain breeds (including Boxers, Shar-Peis, and Golden Retrievers).<sup>2,3</sup>

### HOW DOES STELFONTA WORK?

STELFONTA is a prescription medicine used in dogs to treat mast cell tumors in the skin or in the tissues just under the skin. STELFONTA is given as an injection, directly into your dog's tumor. It destroys the tumor by breaking down cancer cells and starving their blood supply, leaving behind a "pocket" or wound at the injection site where the tumor once was. Wounds are then left open, allowing STELFONTA to promote wound healing.



Tumors treated with STELFONTA typically go through a 4- to 6-week treatment and healing process



### IMPORTANT SAFETY INFORMATION

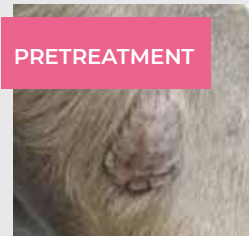
Wear disposable gloves when cleaning the treated tumor site to avoid contact with any residual drug. Thoroughly wash your skin that comes in contact with the treated tumor site, wound, or wound discharge. Ensure your dog receives their prescribed medications to decrease the potential for severe, life-threatening adverse reactions. Monitor your dog during the healing process and contact your veterinarian if you notice excessive pain, lameness, tiredness, refusal to eat for more than one day, repeated vomiting or diarrhea, trouble breathing, changes to the treated tumor site (including increased or excessive swelling and bruising, extensive wound formation, increased irritation) or any other symptoms that concern you. For full prescribing information, contact Virbac at 1-800-338-3659 or visit [us.virbac.com](http://us.virbac.com).



# THE 4 STAGES OF TREATMENT

with STELFONTA® (tigilanol tiglate injection) and what to expect at each stage

## STAGE 1: PRETREATMENT\*



### WHAT TO EXPECT

- Treatment involves oral medications, including corticosteroids and antihistamines, in addition to the injection of STELFONTA. **These medications are very important to reduce the risks** associated with inflammatory substances that can be released from the tumor as the mast cells are destroyed
- Premedication is given 2 days pretreatment and continues until 7 days posttreatment. **It is essential that you give the medications as prescribed**



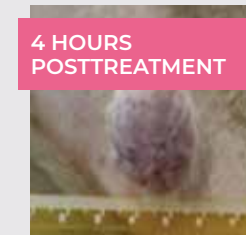
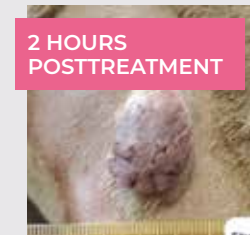
### Helpful tips

- Tell your veterinarian about:
  - Any and all medications your dog is taking
  - Your dog's previous or current medical conditions
  - If your dog is pregnant, nursing, or if you intend to breed your dog
- Give all medications as prescribed by your veterinarian

### IMPORTANT SAFETY INFORMATION

Wear disposable gloves when cleaning the treated tumor site to avoid contact with any residual drug. Thoroughly wash your skin that comes in contact with the treated tumor site, wound, or wound discharge. Ensure your dog receives their prescribed medications to decrease the potential for severe, life-threatening adverse reactions. Monitor your dog during the healing process and contact your veterinarian if you notice excessive pain, lameness, tiredness, refusal to eat for more than one day, repeated vomiting or diarrhea, trouble breathing, changes to the treated tumor site (including increased or excessive swelling and bruising, extensive wound formation, increased irritation) or any other symptoms that concern you. For full prescribing information, contact Virbac at 1-800-338-3659 or visit [us.virbac.com](http://us.virbac.com).

## STAGE 2: TREATMENT DAY\*



### WHAT TO EXPECT

- At the veterinary clinic, your veterinarian will inject STELFONTA directly into the tumor site
- Most dogs do not need sedation or anesthesia during the procedure although occasionally, dogs may be sedated
- Side effects reported in dogs treated with STELFONTA were generally mild and short lasting
  - The most common adverse reactions included wound formation, injection-site pain, lameness in the treated limb, vomiting, diarrhea, and hypoalbuminemia (low levels in the blood of the protein albumin).

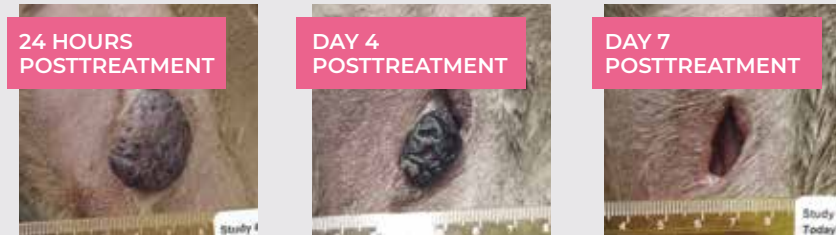
### Things you may notice (within 4 hours after treatment)

- Changes in color of tumor
- Possible swelling at treated tumor site

\*Photos shown on these pages feature a 12-year-old Pitbull with a mast cell tumor on his right thigh, treated with one injection of STELFONTA.

**STELFONTA**<sup>®</sup>  
(tigilanol tiglate injection)  
1 mg/mL

### STAGE 3: TUMOR BREAKDOWN (DAYS 1 TO 7)\*



#### WHAT TO EXPECT

- Bruising or swelling may appear at the treated tumor site, which may last for several days and may cause your dog some discomfort
- The treated tumor site may blacken and leak some fluid for **a few** days
- A reddish “pocket” or wound will form, which allows healthy new skin to grow
- An odor may be given off from the treated tumor site



#### Helpful tips

- Keep wound clean and uncovered. To clean site, use warm water and wear disposable gloves
- Pain medication may be prescribed to relieve discomfort
- Make sure your dog has access to drinking water after treatment

### STAGE 4: WOUND RESOLUTION (WEEKS 2 TO 4+)\*



#### WHAT TO EXPECT

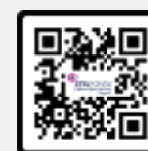
- During this stage:
  - Healthy new skin grows, closing over the wound
  - Skin returns to its original color and hair typically regrows
- Your veterinarian will schedule regular follow-up visits. In some cases, a second injection may be needed if your dog's tumor has not been completely removed



#### When to contact your veterinarian

Contact your veterinarian right away if:

- Your dog is experiencing vomiting, loss of appetite, pain, lethargy, or extensive swelling
- Your dog is excessively licking or rubbing the treatment site
- Your veterinarian may recommend an Elizabethan collar (or e-collar) or a dry gauze bandage to cover the wound
- You have any questions about your dog's treatment or recovery



SCAN ME

For more images of dogs treated with STelfONTA, go to <https://vet-us.virbac.com/home/stelfonta/evidence.html#casestudies> or use the camera on your smartphone to capture this QR code.

**STelfONTA**<sup>®</sup>  
(tiglanol tiglate injection)  
1 mg/mL

\*Photos shown on these pages feature a 12-year-old Pitbull with a mast cell tumor on his right thigh, treated with one injection of STelfONTA.

# BUILD YOUR SUCCESS STORY

with STELFONTA® (tigilanol tiglate injection)



## Wendy and Barney

*Barney's tumor was on his bottom—a tricky place to treat surgically, especially since his tumor was so close to the bowel. And because there's always risks with anesthesia in older dogs, STELFONTA was an easy choice for us to make.*



## Charlie and Buddy

*He responded [to STELFONTA] very well and extremely quickly. He is now happy and cancer free.*



SCAN ME

To learn more about STELFONTA, visit <https://vet-us.virbac.com/stelfonta> or use the camera on your smartphone to capture this QR code.

### IMPORTANT SAFETY INFORMATION

Wear disposable gloves when cleaning the treated tumor site to avoid contact with any residual drug. Thoroughly wash your skin that comes in contact with the treated tumor site, wound, or wound discharge. Ensure your dog receives their prescribed medications to decrease the potential for severe, life-threatening adverse reactions. Monitor your dog during the healing process and contact your veterinarian if you notice excessive pain, lameness, tiredness, refusal to eat for more than one day, repeated vomiting or diarrhea, trouble breathing, changes to the treated tumor site (including increased or excessive swelling and bruising, extensive wound formation, increased irritation) or any other symptoms that concern you. See inside for full prescribing information or contact Virbac at 1-800-338-3659 or visit [us.virbac.com](http://us.virbac.com).

**References:** 1. Garrett LD. Canine mast cell tumors: diagnosis, treatment, and prognosis. *Vet Med (Auckl)*. 2014;5:49–58. 2. Dobson JM, Lascelles BDX. *BSAVA Manual of Canine and Feline Oncology*. 3rd ed. Gloucester, UK: British Small Animal Veterinary Association; 2016. 3. Śmiech A, Łopuszyński W, Ślaska B, Bulak K, Jasik A. Occurrence and distribution of canine cutaneous mast cell tumour characteristics among predisposed breeds. *J Vet Res*. 2019;63:141–148.



**STELFONTA®**  
(tigilanol tiglate injection)  
1 mg/mL





