

# QSM OTTER eQ Pseudomonas Test Instructions V1.3

## OVERNIGHT TEST

### 1

### SAMPLE COLLECTION

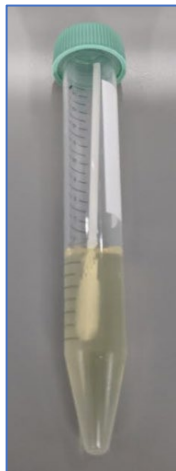
- Do not clean the ear.
- Using the supplied sterile foam-tipped swab, collect as much material as possible from the ear.



### 2

### SAMPLE PREP

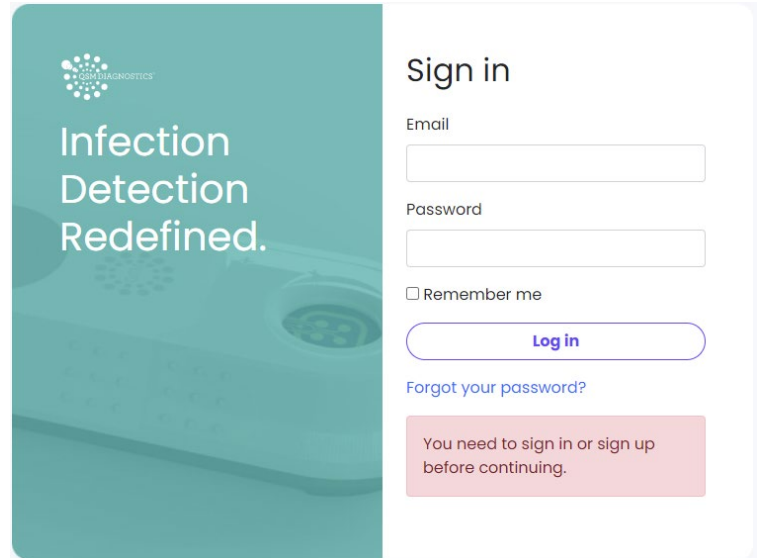
- Snap the handle of the test swab in half and slide the swab far enough into the gel in the culture tube so the cap can close.
- Make sure the plate is switched on and set to 37 °C. Place the tube with the inserted swab in the hot plate overnight (incubate for a minimum of 12 hours).
- Double tap the 4 squares on the right side of the display so that "--" shows on the left side of the display. This will ensure the heat bath continuously remains on. Use the up and down arrows to adjust the temperature to 37.0 °C if needed.



# 3

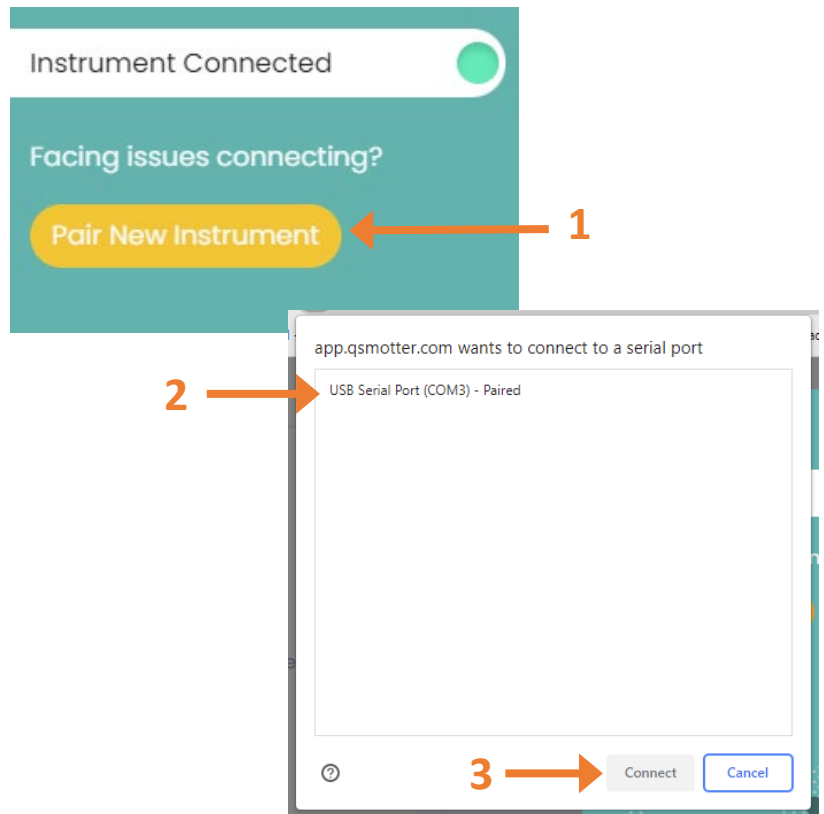
## LOGIN & INSTRUMENT SETUP

- Make sure that the Otter eQ is connected to your computer.
- The very first time you connect the Otter eQ, your computer may prompt you to install a driver. If so, select yes.
- Open a Google Chrome or Microsoft Edge browser tab.
- Go to **app.qsmotter.com** and sign into the instrument software.



## Confirm Connection

- Make sure that the status bar in the upper left shows “Instrument Connected.”
- If it shows “searching for instrument”, you will need to: (1) Click on “Pair New Instrument”, (2) Select USB Serial Port, and (3) Click connect. Your status bar should now say “Instrument Connected” and display a green dot.
- If the USB Serial Port for the instrument is not shown in the menu, please contact us at [engineering@qsmdiagnsotics.com](mailto:engineering@qsmdiagnsotics.com) .



# 4

## RUN THE TEST



1 → [Run test](#)

Dashboard  
Tests

Pet was successfully created.

### Run Measurement

Select Pet

Choose a pet (start typing pet name)

[Create new Pet](#)

Sample Area

Left Ear

Sample Id

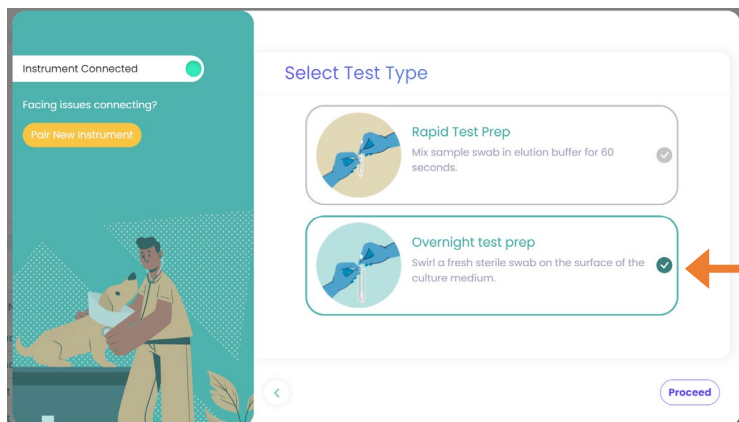
(optional)

2 → [Proceed](#)

- Click “Run test” in the upper right corner of the page.
- Start typing the pet’s name and select the appropriate entry from the dropdown list if the pet is already in the system.
- If the pet is not yet in the system, type the pet’s name and click on the “Add New Pet” button displayed on the screen. Enter the required information and click “Add Pet.”
- \*If you are adding a new pet to an existing pet owner, please go to the “Pets” menu on the left to add the pet and select the existing pet owner from the dropdown menu that displays.
- Select the Sample Area and add an optional Sample ID.
- Click “Proceed”.

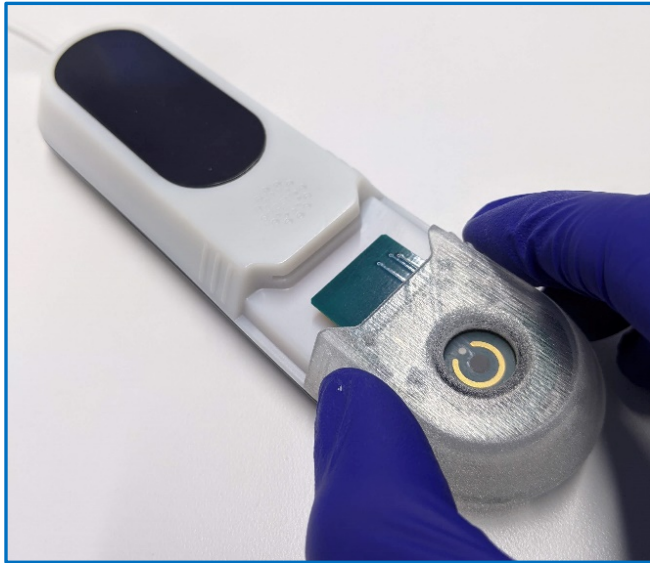
## Select Overnight Test and Prepare Swab Sample

- Select Overnight test prep from the menu and follow the prompt.
- Open a new sterile swab and lower it into the gel in the culture tube so that the foam head in the agar near the air surface. Swirl the tip around the previously inserted swab 3 times.



## Insert Cartridge or Sensor

- Insert a new cartridge directly into the Otter eQ instrument.
- Insert the sensor into the adapter with the mesh facing up toward you. Make sure it is aligned and inserted fully.



## Apply Sample to Cartridge

- Take the swab out from the tube and rub the swab tip over the circular mesh on the sensor until the mesh is fully wet. The mesh becomes more transparent when it is wet.
- Note: If the mesh does not fully wet, you can re-dip the swab tip in the gel and rub the swab tip on the mesh again.



## Run Overnight Test

- Once the sample has completely wetted the mesh, press the “Run Test” button on the screen.
- The test results are saved automatically.
- If the Result is “PENDING” click the reload page button to update the results.
- When you return to the dashboard, the results of recent tests will be displayed. You can click on the icon on the right side to download a PDF of the report.

### Add sample & run test



**Insert sensor cartridge**  
Ensure that the appropriate cartridge has been correctly inserted into the device.



**Check sample coverage**  
Ensure sample has spread across sensor surface.

Run Test

### Recent test results

Pet Owner	Pet Name	Date	Sample area	Type	Result
Jim	Demo	less than a minute	Left Ear	Rapid	Completed

## 5

## REVIEW RESULTS & COMPLETE OPTIONAL SURVEY

Pathogen	Result	Concentration
Pseudomonas	Completed	-

- Select the overnight test that you ran in the dashboard. This will take you to the detailed results page for the test and allow you to complete the appropriate survey.
- If you would like to share your cytology results for our ongoing study, please complete the survey.

Please add Cytology Results

Start press Enter ↵

• Takes 1 min

## 6

## VIDEO LINK & CONTACT INFORMATION

For Questions or Help please contact QSM Engineering by email or phone

Email: [engineering@qsmdiagnostics.com](mailto:engineering@qsmdiagnostics.com)  
Phone: 617-579-2004 Ext. 200

**Overnight Test Demo Video**

<https://vimeo.com/783362678>

Thank You!