



DynaVue Duo

**4-IN-1 DYNAMIC VETERINARY X-RAY
DIAGNOSTIC & SURGICAL SYSTEM
WITH REAL-TIME IMAGING**

Our Solutions

A unique and user-friendly veterinary digital radiography system, DynaVue Duo brings you digital x-ray, fluoroscopy, video, and thermal imaging in a single package for your diagnostic or surgical center.

Designed by the JPI team working with industry-leading veterinarians to optimize workflow, image quality, and diagnostic results. DynaVue Duo is powered by JPI's ExamVue Duo software, developed specifically with veterinarians needs and workflow in mind.

Highlight Features



*Low Dose, High Frequency Generator
For X-ray and Live X-ray Video*



*Industry-leading Image Quality
and Diagnostic Results*



*Switching Between X-ray and
Live X-ray Video Mode Mid-exam*



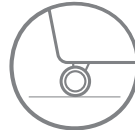
*Easy-to-use and Large
Touchscreen Operating Console*



*220V, 15A Power Requirements
for Easy Installation*



*4-way Floating Table for
Patient Positioning*



*Compact Unit with Wheels for
Convenient Positioning and Easy Cleaning*



*Powered by ExamVue
Acquisition Software*

ExamVue Duo Acquisition Software

With state of the art and intuitive imaging tools, our **ExamVue Duo** software produces clear, concise, and quality images with even larger animals. Reliable and convenient, the **ExamVue Duo** software seamlessly integrates into any professional veterinary practice.

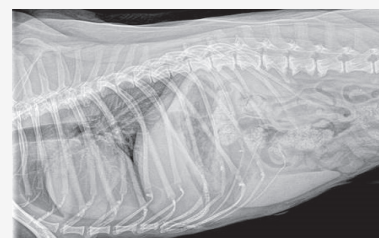


Added Value of Live X-ray Video

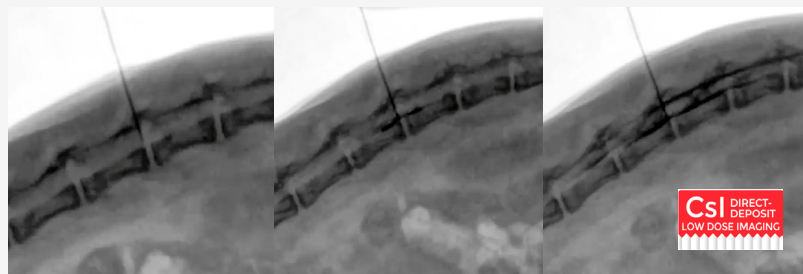
The DynaVue Duo can go from digital X-ray to Live X-ray Video mode mid-exam without any adjustment to your patient. Applications beyond digital X-ray are plentiful with DynaVue Duo's Live X-ray Video capabilities.

- ▶ Evaluating urinary issues
- ▶ Studies of soft tissue or ligament damage
- ▶ Finding small fractures
- ▶ Diagnosing tracheal collapse
- ▶ Investigating possible jaw or skull fractures
- ▶ Diagnosing a hernia
- ▶ Orthopedical issues
- ▶ Swallowing/Esophageal studies

The Live X-ray Video mode is **easy-to-use** and **fast-to-learn**. With low exposure to patients, the Live X-ray Video produces exceptional video quality and industry-leading diagnostic results and satisfies the strict requirements of the vet industry.



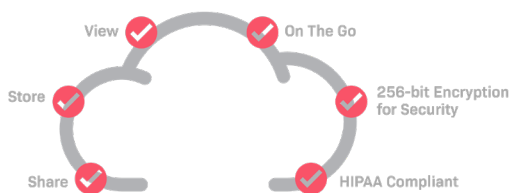
X-ray Images from DynaVue Duo



Live Images from DynaVue Duo's Video X-ray Procedures

JPI Cloud PACS

The JPI Cloud PACS expands your access to your images to anywhere you can connect to the internet and allows for easy sharing with doctors and patients throughout your practice or anywhere in the world.



Incredible Features at Amazing Cost

The DynaVue Duo has is both a fully functional high-end Digital X-ray and Flouroscopy machine at a cost competitive with leading high-end systems.

The DynaVue Duo includes:

- ▶ X-ray Detector and Generator for Static and Fluoroscopy Images
- ▶ Live Visible and Thermal Cameras
- ▶ 4-way floating tabletop with tie-downs
- ▶ Computer with touchscreen monitor
- ▶ ExamVue Duo acquisition software
- ▶ Integrated voltage regulator for electrical protection

Contact us:

3555 Veterans Memorial Hwy, Unit D
Ronkonkoma, NY 11779
sales@jpihealthcare.com
(516) 513-1330 Ext. 3



Phone - 800.233.0210

www.pennvet.com



www.jpihealthcare.com