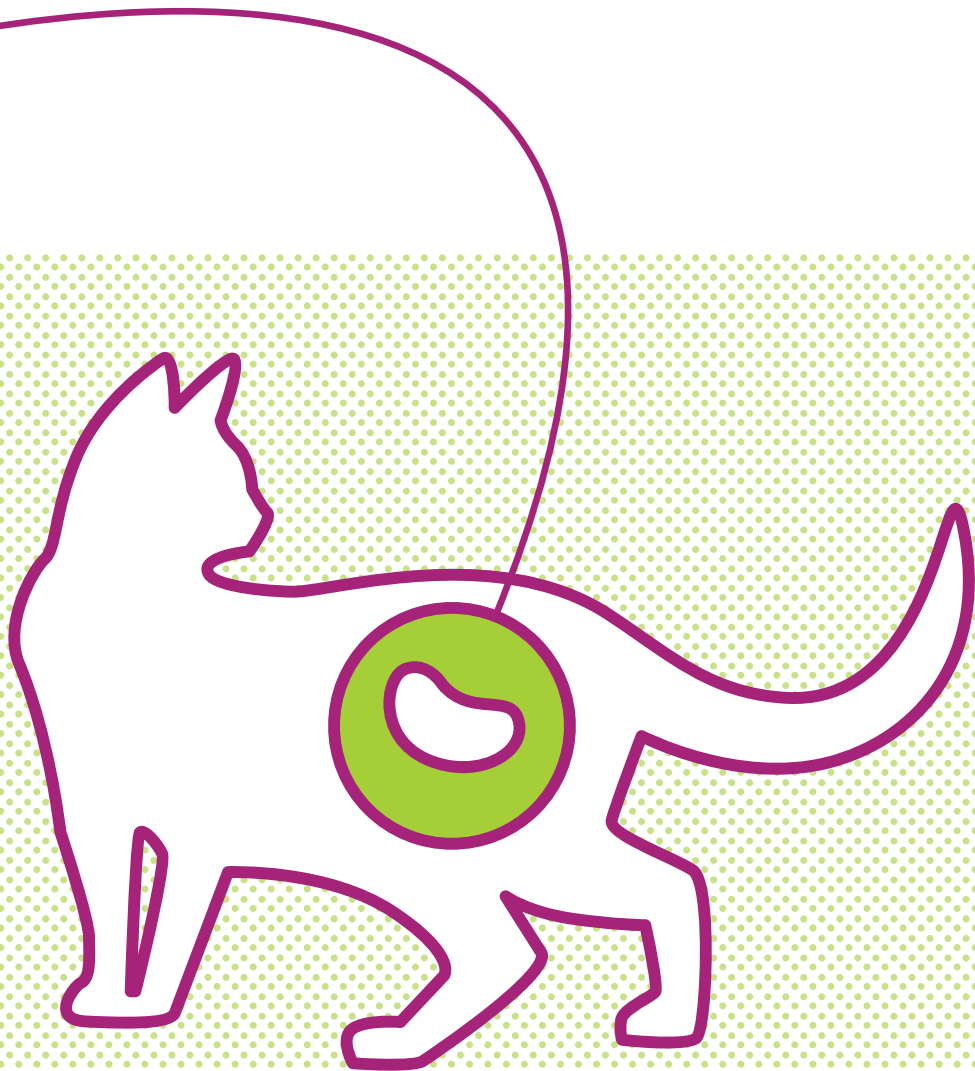


Porus[®] One

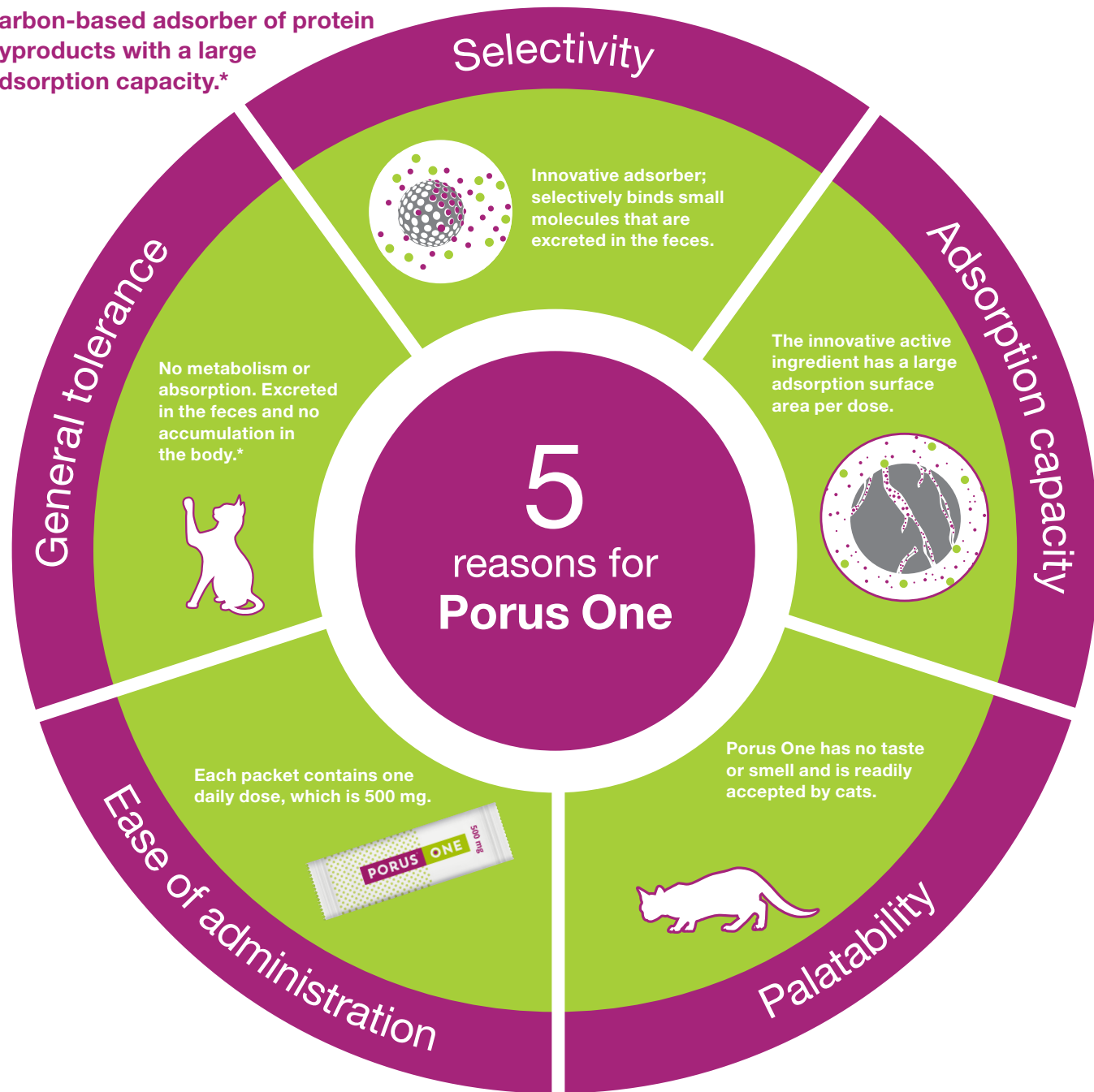
For the support of feline kidney health

PORUS[®]

ONE



Porus® One is a selective carbon-based adsorber of protein byproducts with a large adsorption capacity.*



What are uremic toxins?

Cats, unlike dogs, are obligate carnivores because they derive their energy solely from meat. Their bodies depend on protein-rich food. Protein metabolism leads to a large amount of waste products, which are typically excreted by the kidneys.

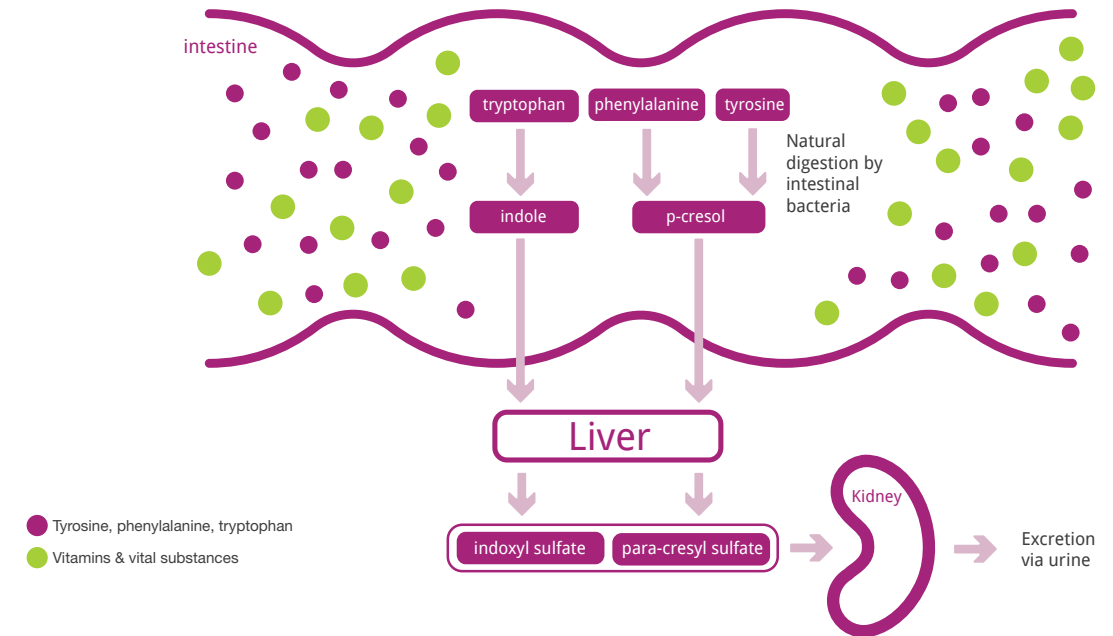
Uremic toxin precursors are produced when intestinal bacteria digest the amino acids tryptophan, phenylalanine, and tyrosine. The uremic precursors indole and p-cresol are then absorbed and

transported to the liver and metabolized into the uremic toxins indoxyl sulfate and para-cresyl sulfate. These toxins are transported to the kidneys for excretion.

Introducing Porus® One

Porus One binds protein byproducts in the intestines where they are excreted in the feces.* This binding process helps to prevent the byproducts from being converted into uremic toxins, which supports kidney health.

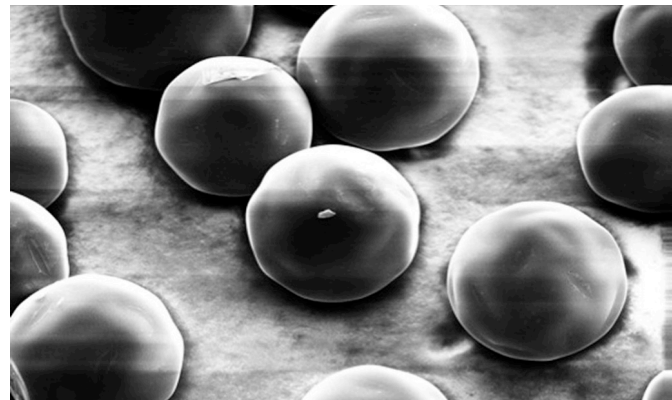
Uremic toxins are formed from essential amino acids



What is Porus[®] One?

Each packet of Porus One contains Renaltec[™], a selective carbon-based adsorber of protein byproducts in the gut.

Renaltec is composed of tiny, black homogenous spheres with diameters of 0.1 to 0.3 mm. Each sphere has a smooth surface and is perforated by numerous pores leading to a branched channel system similar to the bronchi. This smooth surface assures an unimpeded passage through the GI tract, neither adhering to the mucosa nor accumulating in the intestine.*



Electron microscope image of Renaltec

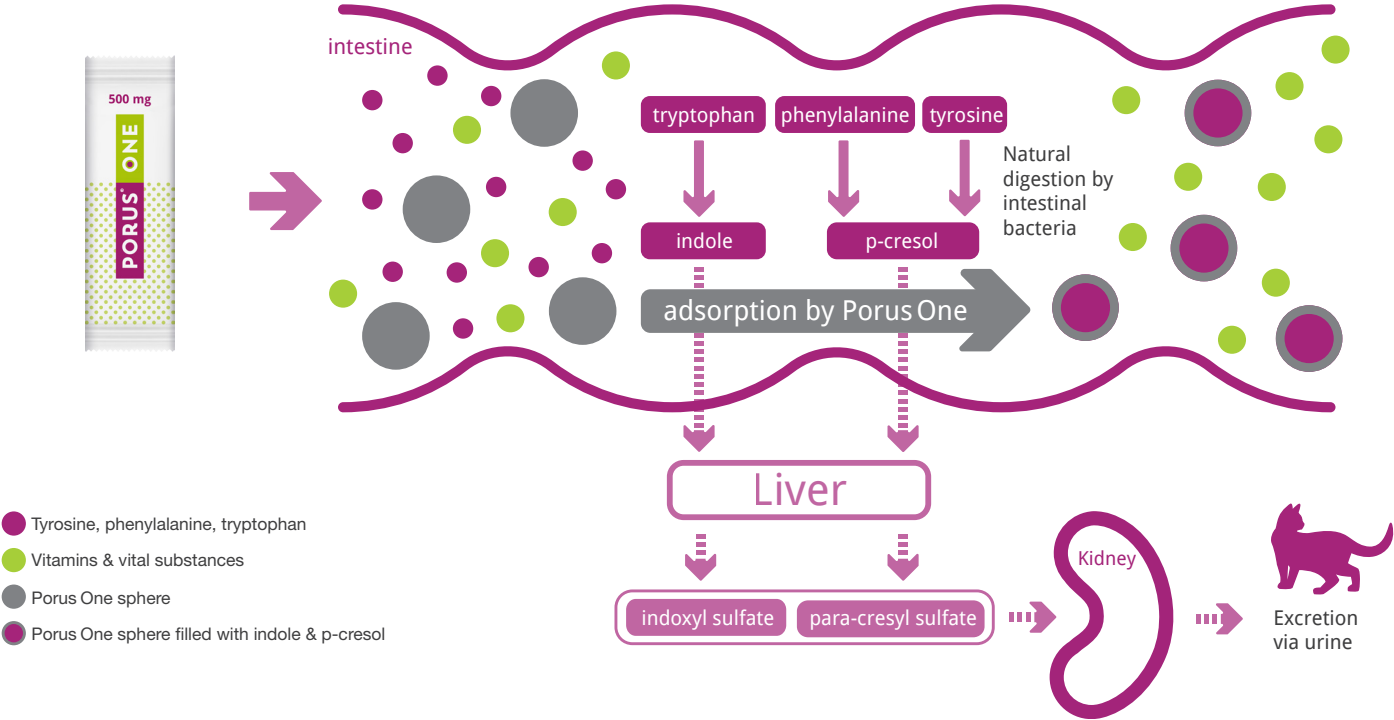
- Tyrosine, phenylalanine, tryptophan
- Vitamins & vital substances
- Porus One sphere



How does Porus[®] One work?

Porus One binds protein byproducts in the intestines where they are then excreted in the feces. As a result, the byproducts cannot be converted into uremic toxins.

Reducing uremic toxin production supports kidney health



Selectivity is key

Molecular Size

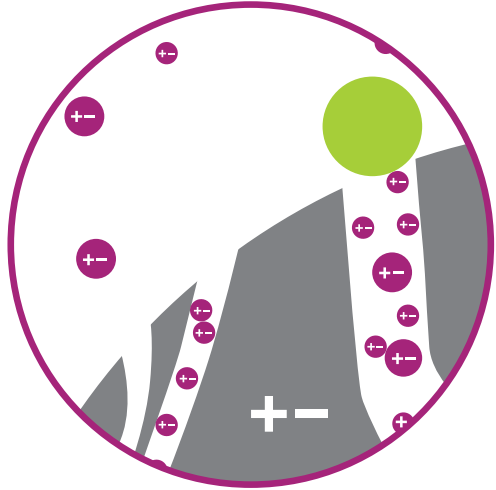
The pores are manufactured to be so tiny that only very small molecules, such as uremic toxins, can enter the sphere's interior. Particles with a larger diameter (such as vitamins and enzymes) are less able to enter.



Molecular Charge

Uremic toxins are bound inside the spheres because of an opposite electrical charge.

The electrical charge of the Renaltec spheres facilitates this binding.



Large adsorption capacity

Due to its spherical shape and the inner branched channel system, Porus One has a large adsorption capacity.

General tolerance

Porus One is excreted in the feces. It is neither metabolized nor absorbed and does not accumulate in the body.

Has Porus[®] One been studied in cats?

In an 8-week study of 18 healthy geriatric cats (11 to 16 years of age), Porus One was shown to be beneficial for kidney health. Twelve cats received 500 mg of Porus One daily and six cats served as a negative control, receiving the same type of food as the Porus One group. The mean serum indoxyl sulfate concentration was reduced by more than 60% in the Porus One group while no significant change was observed in the control group. Porus One was also readily accepted and well tolerated by the cats.**

How is Porus[®] One used?

Porus One is tasteless and odorless, and can be easily administered to cats once daily at mealtime. If your feline patient takes other oral medications, those should be given at least two hours prior.

NOTE: it is normal for a thin layer of Porus One to remain inside the packet.



One carton contains
30 daily doses

For more information contact your Dechra Representative or call (866) 683-0660.

24-hour Veterinary Technical Support available at (866) 933-2472.

Nonurgent Technical Support available by emailing support@dechra.com.



*Data on file.

**Mottet J, Kowollik N: BSAVA Congress Proceedings. 2019. 424-425.

Porus is a registered trademark and Renaltec is a trademark of Porus GmbH.
©2021 Dechra Veterinary Products. All rights reserved. 11SD-POR21001-0421

PORUS[®] ONE