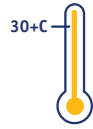




IMPORTANT POINTS TO REMEMBER



Avoid using the Phovia system in pets with photosensitivity conditions, such as porphyria or certain medicines.



The lamp will be hot after use - do not use it in an oxygen enriched atmosphere or around flammable gasses; and make sure the lens does not touch the patient's skin (or yours). If the environmental temperature is above 30°C, allow a 60-second cooling period before starting a second cycle, or the system overheat protection may be triggered, prematurely ending the cycle.



As with any electronic equipment, it is important to make sure that the lamp is maintained in good condition, and only using authorised equipment and accessories, and kept at least 30cm away from strong radio emission sources or sensitive electronic equipment.



If moved from a cold to a warm, humid space, damaging internal condensation may occur. Make sure the lamp has reached ambient temperature before turning it on!



The lamp is not suitable for self-repair or adjustment - contact the manufacturer if there are concerns about equipment performance, or if repairs are required. Sometimes the lamp will make a "beep" noise. This may indicate:

- Start or end of a light therapy cycle.
- Empty battery.
- Overheat warning.
- Starting or ending a charging cycle.



The lamp comes with rechargeable batteries. The charge state is indicated by the charge indicator light:

- Solid green = full charge, with capacity for 25 cycles.
- Blinking green = under 50%, capacity for less than 12 cycles.
- Blinking yellow = needs charging, less than 4 cycles left.

When charging, each white bar represents 20% of battery capacity, a solid yellow light means that there is enough capacity for one cycle at least.



PHOVIA

Faster skin recovery by light

Introducing a new approach to veterinary dermatology...

light therapy



INSTRUCTIONS FOR USE





1 check



CHECK THAT ALL THE COMPONENTS OF THE SYSTEM ARE READY FOR USE:

- Check that there is no sign of damage to the ampule or jar of gel. The jar gel should be translucent, while the ampule gel should be bright orange. Make sure they stay in the foil package until just before you need them!
- Check that the lamp is charged - the power indicator should be lit green or (if low but still able to be used) yellow.
- Make sure the lamp is clean.

2 prepare the gel

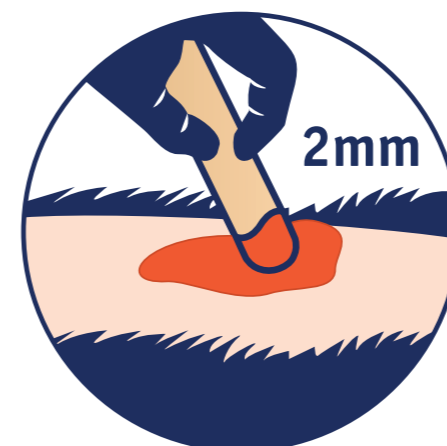


- Wear gloves, use the supplied spatula to thoroughly mix the orange chromatophore gel into the translucent carrier gel.
- Remember, once mixed they need to be used immediately, and kept covered until application.

3 prepare the pet

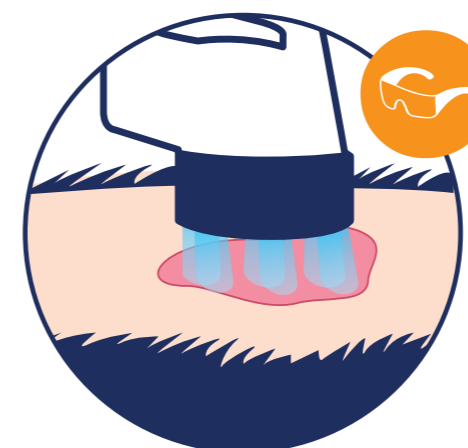


- Remove any dressings, clip and clean the skin.
- Use sterile saline, or a skin cleaner of your choice followed by sterile saline.



4 apply the gel

- Use the spatula to apply a layer of gel about 2mm thick.
- Cover the whole of the area.



5 start

START THE LIGHT THERAPY:

- Make sure everyone present is wearing their goggles, and the pet is facing away from the light.
- Hold the lamp - the lamp's cone should be as close as possible to the skin without touching the gel.
- Press the "START/STOP" button to start the light therapy cycle - a beep will sound.
- The timer will run for 2 minutes. Each bar on the "timer/battery level" indicator is for 24 seconds, and will count you down. At the end, another "beep" will sound and the light will automatically turn off.



6 clean up

- Gently wipe away the gel using a gauze soaked in sterile saline.
- Clean the lamp and put away or put on to charge.