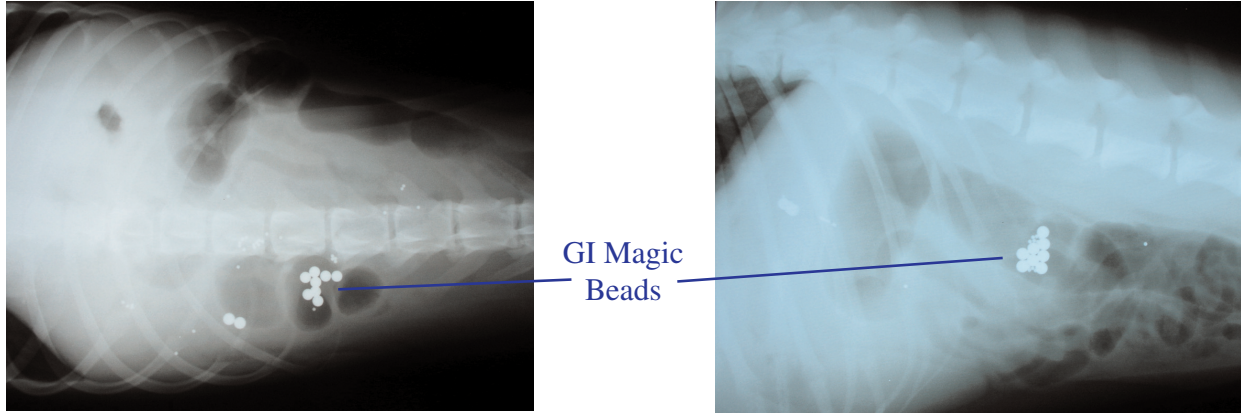


GI Magic Beads

Is that a GI foreign body or not?



Liquid barium is useful for diagnosing suspected GI foreign bodies on radiographs, however partial obstructions can be difficult to interpret on radiographs even with barium. The use of radiographic markers before barium administration can really be useful in suspected foreign bodies, invasive neoplasia, or gastric motility disorders such as Heus.

Radiograph markers are:

- Radiopaque small beads of 1.5mm and 4.7mm diameter
- Stainless steel non-corrosive and inert material
- Readily pass through normal GI tract
- Beads are packaged in small gelatin capsules for ease of administration
- Considerably less expensive than Barium impregnated polystyrene beads
- Keep in clinic ready to go when that emergency case presents itself.



J1146 Small pack for cats and small dogs

Each dose consists of 4 smaller gelatin capsules with 30 x 1.5mm beads and 10 x 4.7mm beads
Total of 5 doses.

J1146a Large dose pack >30lbs dogs

Each dose has 2 larger gelatin capsules with a total of 30 x 1.5mm beads and 10 x 4.7mm beads
Total of 5 doses

J1146b Combo pack

Two doses of both small and large packs

Jorgensen Laboratories, Inc

1450 Van Buren Ave., Loveland, CO 80538 www.JorVet.com Info@JorVet.com