

Atopivet™ Collar helps maintain a healthy skin barrier by hydrating and nourishing the skin of dogs and cats. Biosfeen® is a unique sphingolipid extract that contains ceramides and a high sphingomyelin content, a precursor of ceramides.

**Contains:**

Sphingolipids (Biosfeen) 2.5%, Lavender fragrance 1.5%

**Directions for Use:**

Remove the collar from the protective foil pouch. Unwind the collar, pull on the tab as shown in the pictogram, and immediately place on the pet's neck. There should be enough room to slip two fingers between the collar and your pet's neck. Any excess collar length of greater than 1 inch (2.5 cm) beyond the closure should be cut off. Lavender fragrance will be strong initially, but will dissipate within 24-48 hours.

For best results the collar should be worn continuously for 2 months, and can be worn while bathing or swimming. This collar is not intended to be used for the purposes of securing a pet to a leash, or any other object.

**Caution:**

For topical use only. Avoid contact with eyes. If skin irritation develops or increases, stop use and call your veterinarian. Keep out of reach of children and pets. Do not apply on damaged or irritated neck. Do not apply if there is known sensitivity to any components. Do not use on puppies less than 4 months old.

**Warning:**

Contains reaction mass of bis(1,2,2,6,6-pentamethyl-4-piperidyl) sebacate and methyl 1,2,2,6,6-pentamethyl-4-piperidyl sebacate. May cause an allergic skin reaction.

Store at room temperature.

Available through licensed veterinarians.  
For Veterinary Use Only.

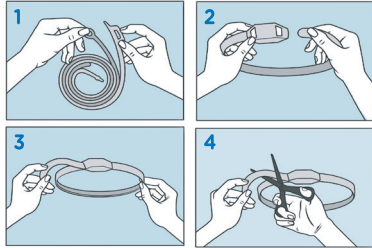
Product of France

**Manufactured for:**

Dechra Veterinary Products  
7015 College Blvd.  
Overland Park, KS 66211  
866.933.2472  
www.dechra-us.com

Atopivet™ and Biosfeen® are trademarks of BIOIBERICA S.A.U.

ATOP-SMCOL REV05/22



# Atopivet™

## Skin Care Collar

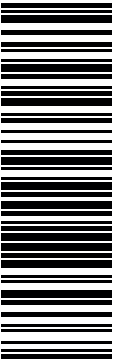
Formulated for dogs and cats less than 22 lbs (10 kg)

Helps maintain healthy skin barrier for up to 2 months

With Biosfeen®



One Collar  
13 inches, 35 cm



ATOP-SMCOL

243220  
V009278/0522