

# Sutureless Hematoma Repair System<sup>®</sup>

## Procedure Guide



1. Prep ear. Outline and incise hematoma. Remove a small section of skin. Scrape Between layers.



2. Secure pad to each side of ear with towel clamps.  
**DO NOT CUT OPENING IN PAD OVER INCISION.**



3. Push needle through both pads and ear (medial to lateral).



4. Place tip of clip into tip of needle. Pull needle and clip back through ear and pads.



5. Slide ring onto clip **FLAT** side down. Leave 1 ring depth between pad and ring\*. Place 2nd ring onto 1st, **FLAT** side down.



6. Continue placing clips/rings no closer than every other fenestration in the pad\*.



7. Cut clips leaving 1/4" past second ring. **DO NOT TRIM COMPLETELY IN THE EVENT YOU PLACE THE RINGS TOO TIGHT.**



8. Suture attachment button to the head opposite the ear you are treating. The ear should sit snug and flat against the head.



9. Slide the slots in the pads onto the button. You can use a clip and ring to lock the pads to the button if desired.



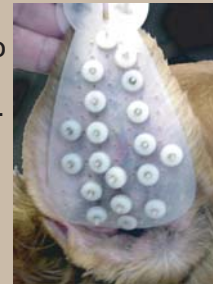
10. The patient is ready to go home. **NO BANDAGING REQUIRED!**

### Post-Operative Care:

- Bandage is not necessary, but an e-collar may be necessary for some animals to protect the repair.
- Apply antibiotic/steroid ointment through fenestrations in both pads every 3 days.
- Inspect and clean under pads & clips with peroxide soaked swabs weekly or sooner if indicated.
- Pads may be left up to 3 weeks if no signs of pressure lesions; however, normal treatment time is 14 days.

### Removal:

- Remove by cutting off the head of the clip from the external surface of the ear and pulling by the ring to exit the ear. The first 1/4" of the clip shaft is smooth so the clip can be removed painlessly and without sedation.
- Apply an antibiotic/steroid combination to the ear flap for 24 hours to relieve any irritation.



One week post surgery



Pads removed 2-3 weeks post surgery

### \*WARNING!

- **DO NOT OVER TIGHTEN THE CLIPS AS THIS COULD RESULT IN IRRITATION OR PRESSURE NECROSIS!**  
Place a ring to the side of the clip to act as a spacer prior to sliding the 1st ring in place to help prevent over tightening.
- **LEAVE AT LEAST 1/4" BETWEEN EACH CLIP.**  
The tip of a syringe or swab should fit easily under the pad and between the clips. If not, the clips are too close together and/or the rings are too tight.
- **BACKING THE LOCK RINGS OFF OF THE CLIP CAN DAMAGE THE LOCKING TABS ON THE RING!**  
Use a new ring if backing off is required.
- **ALWAYS DOUBLE RING.**

Visit our web site at [www.pactivet.com](http://www.pactivet.com) or call our customer service department 800-535-4057 for more information.



Phone - 800.233.0210 [www.pennvet.com](http://www.pennvet.com)

Copyright© 2008 Practivet. All rights reserved.

