

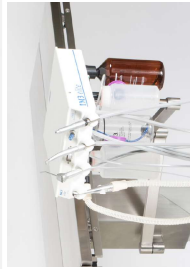
TARA

by **IM3**[®]



Design for the real world.

After looking and listening for many years we at iM3 believe we have the ultimate in Dental Table design for the real world with TARA by iM3.



INTEGRATED iM3 CONTROL TOP

Any of our world renowned iM3 dental units can be integrated to the table using our double hinge top that allows the dental unit to be rotated 180 degrees. Plus if you have an existing iM3 dental unit, it can be easily attached to Tara's arm.



Alternatively, Tara is available without the dental unit and makes a perfect companion piece for the iM3 Pro X stainless steel table. Or it can be used standalone with any of our cast solutions.

ROUND DENTAL TRAY

Our dental tray gives greater comfort for the veterinary staff than the traditional square tray. Using a grid that goes all the way to the edge of the tray rather than a mesh or rods to allow for more effective draining of liquids away from the animals' head no matter what part of the tray you like to work at.

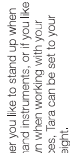


Our adjustable bracket lets you drop the tray and the head on as tall as 50cm. Also, you can adjust the height of the table to get a consistent level if using blankets or heated pads.

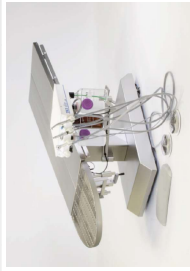


STABLE AND ERGONOMIC

The table is designed to give you and provide the most ergonomic veterinary dental experience available. From its maximum height of 115cm to its lowest at 59cm, Tara remains stable at all heights, even with heavy loads.



So whether you like to stand up when using the table, or you like to sit down when working with your hand pieces, Tara can be set to your perfect height.



MOTORISED LIFTING COLUMN

Motorized column for effortless lifting and tilting of the table top. To reduce the strain on the operator, Tara's design allows for easy tilting and control. Furthermore, Tara has a built-in power sockets built into the table for possible accessories such as lights.

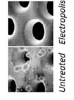


The operation of the lifting column and the tilt of the V top table is controlled by a wireless foot remote meaning no additional wires on the ground.

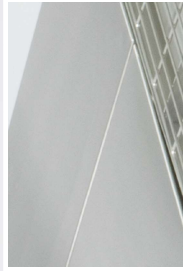


STAINLESS STEEL WITH WARMING

We use only the highest quality materials in Tara, the main V-top is made from Stainless Steel with optional warming. We use infra red to heat our warming plates which transfers heat evenly to the warming spots. The dental tray itself is electro polished stainless steel.



Electro polishing results in smooth polished surfaces which are almost inert, increasing resistance to oxidation, ensuring longer life and a higher resistance to antibacterial products.



V TOP TABLE

The Stainless Steel V Top table is driven by 4 low voltage individual motors allowing them to move independently of each other, allowing the table to be used as a surgery table. Using a V top table for dentistry makes it easier to turn the animal over and gives better positioning and comfort for the animal.



Each plate on the V top has its own completely independent of each other, whenever you needs Tara can adapt effortlessly.



REAL WORLD DESIGN

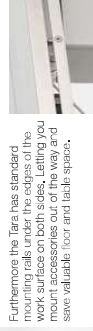
Tara is ready for every patient and every eventually, the table has a wide range of accessories and extension available, either for larger animals, or as a convenient place for monitoring equipment or surgical instruments.

For any liquids that might leak on to the V top there is a convenient pull out drain giving you peace of mind.



WORK AROUND YOU

To help keep your working space as organised and as stress free as possible, you can take advantage of the Tara's work around you capabilities. Tara has a monitor arm for monitoring equipment or anything else you will have less wires and cables running across the floor.



Furthermore the Tara has standard mounting rails under the edges of the work surface on both sides. Letting you mount accessories out of the way and save valuable floor and table space.

INSTRUMENT TRAY AND MONITOR ARM

To help you work around you, you can choose to have a stainless steel instrument tray, made from the same high quality materials as the rest of the table.



Also available is our new Monitor Arm with a standard iM3A connector. It can be used with a screen or multi parameter equipment. (screen not included)



PRACTICAL AND MOBILE

Everything about the Tara table is designed for the real world. When in place the brake is applied and the heavy duty wheels are retracted into the base, giving the robust stability of the table even at full height.



The brake can then be simply released by foot, the wheels drop down and the table becomes mobile once again, allowing ease of access when cleaning.

iM3 DENTAL MAT

Deliberately designed to fit, the popular Dental Mats from iM3 fit perfectly on the Tara table. The mat fits the maximum area of the tray while still leaving the sides clear for veterinary staff to discard debris and extracted materials into the tray.



The iM3 Dental Mat provides comfort to patients and veterinary staff and at the same time allows liquids to drain away from the mat. The mat is made from a heavy duty machine washable up to 140°C and are made from recyclable plastic.

“Tara from iM3 is a stable, durable, high end dental table, with a lot of innovative solutions.

For the veterinary dentist, the Tara table will be a best friend for life.”

- Jens Ruhnau, TandDyreklinikken
DVM, Specialdyrlaege, Dipl.EVDC,
EBVS European Veterinary Specialist in Dentistry

**Design for the real world.
Choose the setup that fits your
Dental Lifestyle.**

OPTIONS

TB0001—iM3 Tara Table

TB0002—Dental Tray and bracket

TB0004—Table Mounted Arm for Dental Unit

TB0005—Table Extension

TB0006—Warming

TB0007—Additional Dental Tray

TB0008—Instrument Tray on arm

TB0009—Monitor Arm with VESA Connection

U3301T—iM3 GS Deluxe Dental Unit Control Top

U3302T—iM3 GS Deluxe LED Dental Unit Control Top

U3400T—iM3 Elite Dental Unit Control Top

U3069T—iM3 Pro 2000 Dental Unit Control Top

I62000—iM3 Silent Hurricane Compressor

Quotes available on request

TECHNICAL DATA

Length (V-top only) – 120 cm

Length (V-top + dental tray) – 160 cm

Width (V-top) – 60 cm

Table extension (optional) – 30 cm

Total weight – 95 kg

Safe load – 160 kg

Height adjustment – 59 - 115 cm

Tilting 0-10 degrees.

Motors – 4 pcs, 24V; IP 54



Martin Hedin, Ulvsby Smådjursklinik, Sweden



A-vet Smådyrklinnikk, Norway



Sten Kokholm, Slagelse Dyrehospital A/S, Denmark



See **TARA** in action on our YouTube channel
Search iM3 Direct or scan the code with your
smart phone!



Phone - 800.233.0210

www.pennvet.com