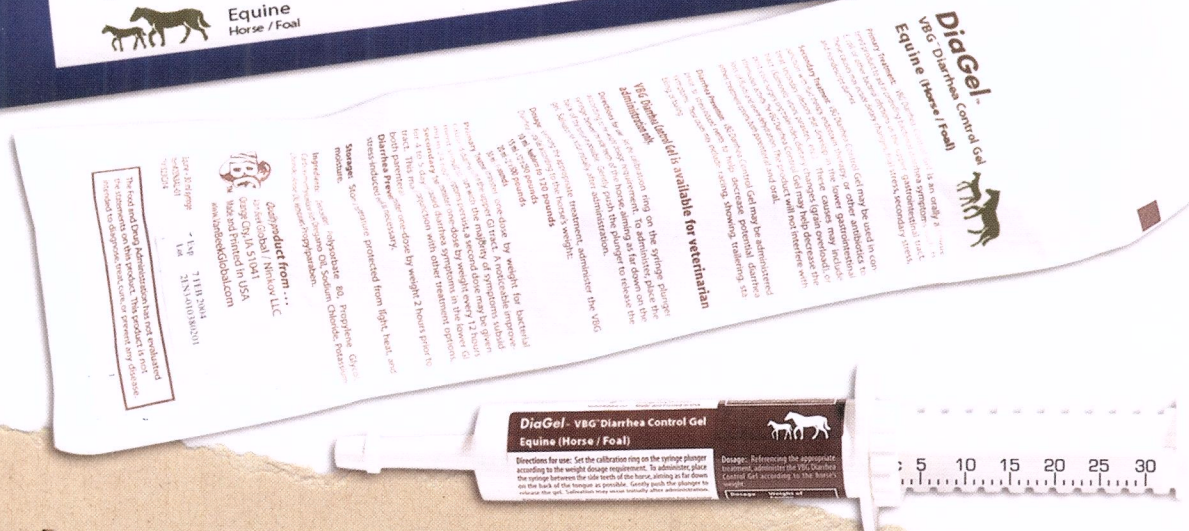
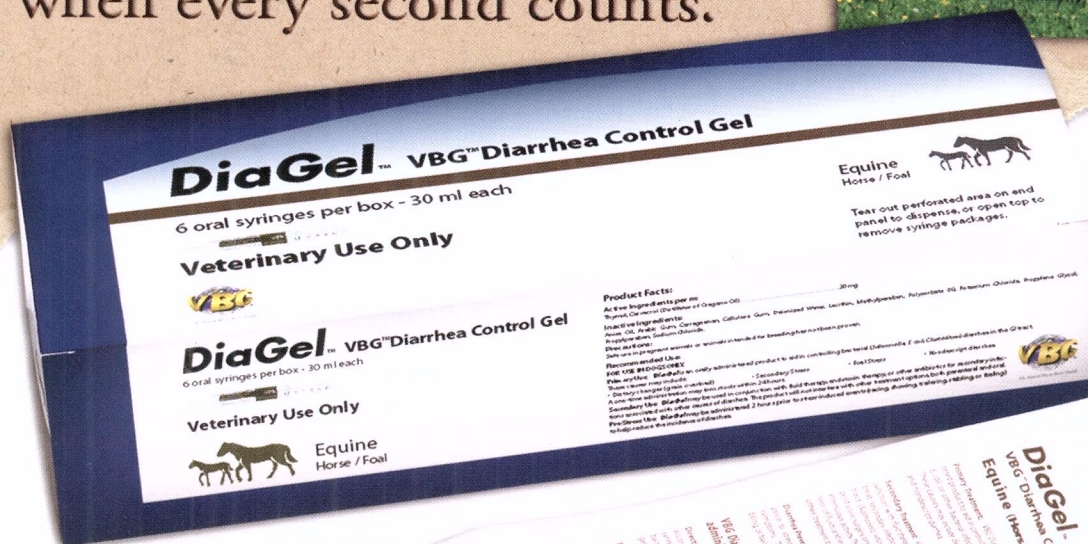
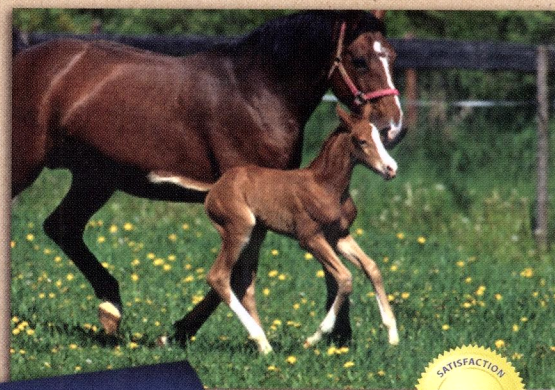


FOAL DIARRRHEA

DiaGel™

The natural alternative
when every second counts.



DiaGel™ Diarrhea Control Gel

- An orally administered product which may aid in controlling diarrhea by eliminating bacteria in the GI tract. These causes may include:
 - Diet and/or water changes
 - Environment changes
 - Indiscretions in diet
 - Stress
- Decreases the loss of fluids and minimizes dehydration
- 30 ml syringe with ring for accurate administration

NSF Certified



Registered to
ISO 9001:2000
HACCP: 9007
Registered

See back for more information.

Product Available From:

PENN
Veterinary Supply, Inc.
Phone: 800.233.0210
www.pennvet.com

VAN BEEK
NATURAL SCIENCE

3689 460th Street
Orange City, IA 51041
toll free: 800.346.5311
fax: 712.737.2878
www.vanbeeknaturalscience.com

Using *DiaGel*™ Diarrhea Control Gel in Foals

With so many anti-diarrhea syringes on the market, it's hard to know which product to use. How is *DiaGel* different from other products? When and how should it be used?

DiaGel is unique in the way it works. It is an all-natural product that eliminates bacteria on contact. The active ingredients in *DiaGel* are thymol and carvacrol, natural substances derived from the oregano plant. These ingredients act specifically against bacterial cells without any toxicity to the host. There is a three step mode of action:

1. **Penetration through cell membrane** (The active ingredients cause a leakage of intracellular substances altering the permeability of the cell membrane.)
2. **Inhibition of Albumin Synthesis** (The active ingredients also disrupt the process of cell breathing in the mitochondria in aerobic organisms to suffocate the microorganism.)
3. **Metabolism & Excretion** (A major part of the active ingredients is absorbed in the intestines. 90% of the absorbed ingredients or its partially metabolized products is excreted through the kidneys leaving the body as urine/H₂O.) The remaining 10% is excreted through the lungs in the form of CO₂.

The active compound has been tested by Cornell University (See graph below).

Sometimes it is easier to understand what *DiaGel* IS by defining what it IS NOT.

DiaGel Diarrhea Control Gel:

- **IS NOT** a smectite clay or charcoal used to absorb toxins and gel up the stools.
- **IS NOT** an electrolyte used to restore energy.
- **IS NOT** a pro-biotic used to increase the good bacteria in the gut.

DiaGel can be used in conjunction with these anti-diarrhea products. When trying to control diarrhea, use *DiaGel* first and wait 6-8 hours before administering other products.

DiaGel Diarrhea Control Gel:

- **IS** a very effective product for controlling environmental diarrhea in the GI tract caused by dietary changes (grain overload), foal stress, secondary stress, and nondescript diarrhea.
- **IS** a great product to use for foal heat diarrhea.
- **IS** a good choice for secondary infections associated with other causes of diarrhea. It will not interfere with other treatment options, both parenteral and oral.
- **IS** effective when used prior to stress-induced events (racing, showing, tailoring, stabling, or foaling) to help reduce the incidence of diarrhea. Tests at the racetrack for drug use are negative.
- **IS** an effective, natural alternative.

As with all Van Beek Natural Science products, the **100% Satisfaction Guarantee** applies.

Please request your free *DiaGel* product sheet with Q & A's, university studies and detailed technical info from your distributor representative.

